

LEARNING RESOURCES  
6220 EAST TEXAS ST  
BOSSIER CITY, LA  
71111  
(318) 678-6275

#### FACULTY STAFF DIRECTORY

Ginger Bryan  
Dean of Learning  
Resources

Brenda Brantley  
Head of Public Services

Kristi Lobrano  
Systems Librarian

Judy Spears  
Library Assistant

Susie McDowell  
Administrative  
Assistant III

Roxie Johnson  
Acquisition/Receiving Clerk

Stephanie Cox  
Periodical Clerk

Pam Harris  
TRC Manager

Laura Jones  
TLC Program Coordinator

Sonny Bernard  
TLC Lab Manager

Pat Jolley  
TLC Assistant



BPC is a member of the Louisiana  
Community and Technical College  
System (LCTCS).

# BPC Library News

## BPC Going "Green"

VOLUME 4, ISSUE 3

FALL 2009

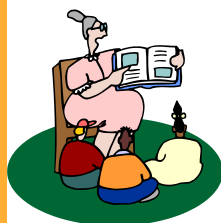
### Dean's Message

In the July 2009 issue of Smithsonian an article talks about "forever" institutions, such as libraries, universities, and museums, and how important these institutions are in uncertain times. By providing stability and continuity at all times, the author acknowledges that these institutions are best at sustaining their core values when facing new challenges.

New challenges seem to arrive every day at the Library. Having had to adjust to a shortage of faculty and staff positions due to retirements and departures, and to less financial stability, the Division of Learning Resources is now adapting to a younger generation with new communications and networking tools. With a mission to provide the library and learning resources and services required to support the mission of Bossier Parish Community College, the Division is working this semester to update its website, provide ways to reach students via the new communications tools, and explore the possibility of using networking tools. Changes and challenges—what the Division of Learning Resources is all about (as well as having your favorite well read literature).

### Changes in Learning Resources

On October 1, the Learning Center became part of the Division of Learning Resources, joining the Library and Technology Resource Center. As this semester continues, changes are being made to increase student access to Learning Resources. Plans are in progress to make all Learning Resources one large area, accessible through either the Library or Learning Center entrance. Work is progressing in the Learning Center to find an easier way to track its statistics and provide easier access for students using equipment and materials. The Learning Center has been added to the new Learning Resources website. Next semester, forms similar to those used by the Library will be available for instructors to request Learning Center orientations and an electronic calendar will track these orientations. Changes and challenges—we do them well!



### Reading to Plantation Park Kindergarteners

The librarians are continuing its community service project of reading to the kindergarten class at Plantation Park Elementary School, located at 2410 Plantation Drive in Bossier City. The readings take place on Wednesdays from 12:30-1:15 p.m. Each librarian selects a time to read to the children and is accompanied by a BPC athlete. Both librarian and athlete read to the children. The children are very attentive and love to see the pictures. The project was very successful last year and we are expecting it to be even better this academic school year.



# Happy Holidays from BPC Library



Library Exhibits

BPCC  
Turning Green  
2009 / 2010

BPCC T-Shirts  
August 17 to  
September 10

Presidential  
Libraries  
September 21 to  
November 12

Reading  
Wonderland  
November 16 to  
December 18

Robert Burn's  
Collection  
January 25 to  
March 12

Hollywood South:  
Films in  
Northwest LA  
March 22 to  
May 7



**Annual Food Drive**  
This is the Library's **16th year** to sponsor the annual food drive. Barrels are placed in **buildings A-B-E-G from OCT. 26<sup>TH</sup> – DEC. 7<sup>TH</sup>**. Food donations will go to the Northwest Louisiana Food Bank to help feed our neighbors. So the next time you visit your local grocery store, grab an extra food item for such a worthy cause!

**Book Drive**

The Library Committee is collecting "*gently used books*" to distribute to agencies where people are helped. Please drop off books suitable for both children and adults in the boxes located in the lobbies of Buildings A & D.



**Library Hours**  
Monday - Thursday  
7:00 am-8:00 pm  
Friday  
7:00 am-4:30 pm  
**TRC & TLC**  
*hours vary lightly.*

**Library Professional Development Workshops**

**Kristi Lobrano** presented two workshops to the library staff and one to all faculty and staff. "*A Circulation Refresher*" on August 19 provided topics for checking out items and reviewing student records. "*Outlook and Yahoo Calendar*" on August 28 focused on organizing events on personal calendars in Outlook as well as how to utilize the Yahoo calendar for Library events. Library faculty and staff will apply ideas to organize and improve time more effectively. "*Google Docs*" on October 15 & 22 was helpful in assisting one if a flash drive was not available and one needed to access an assignment on it. Also, one was able to learn how to use Google Docs to create, access and share documents, spreadsheets, and slide presentations online.

**Brenda Brantley** presented a workshop on "*Time Management from the Inside Out*" on August 21. The purpose of the workshop was to assist in productive time management with limited amount of personnel. Seven tools to time management included 1) self-assessment 2) task timing 3) 4D's application 4) picturing big 5) time mapping 6) space formula and 7) one planner at a time

**Library Orientation Classes**

Within the first week of classes, library orientation scheduling began. The purpose of a Library orientation session is to acquaint students with Library facilities, procedures, and resources. These orientations encourage students to utilize readily available resources and reduce Library anxiety. Faculty are asked to fill out the orientation form online via the BPCC Library websites.

**TRC Lab Updated**

The TRC lab will be upgraded thanks to funding from student technology fees. The new computers will have significantly smaller CPUs allowing for additional work space. The need for extra work space is based on request from TRC surveys. All currently available software will be loaded on the new computers. A complete list of software on TRC computers is available at <http://www.bpcc.edu/bpcclibrary/trcsoftware.html>



**BPCC's Campus Wide Identification**

Remember that the CWID card is necessary for many services in the Library. A current BPCC ID is REQUIRED to use the TRC, TLC, check out books, audios, or use reserve materials.